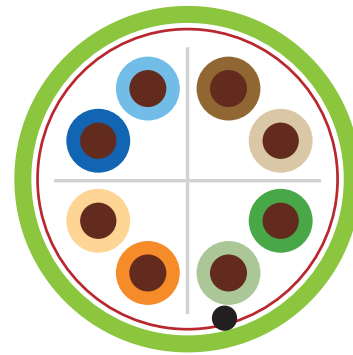


PATCH CORD Category 6A Un-shield



Category 6A F/UTP Patch Cord

UNSHIEDED COPPER CABLING SYSTEM

DESCRIPTION

LANSAN Category 6A F/UTP Patch Cords are made in flexible stranded conductor with Snag-less Booted Design, easy to insert and remove cables in high density applications.

Combined with Un-Shield Keystone, LAN Cable and Patch Panel, it provides excellent compatible performance.

SPECIFICATION

Conductor	26AWG, Stranded Copper
Insulation	Foamed Polyethylene (FPE)
Shield	Overall Aluminum Foil / Drain wire
Outer Sheath	Low Smoke Zero Halogen (LSZH)
Plug	Gold plated connector
Installation Temperature	0°C ~ +50°C
Operating Temperature	-20°C ~ +60°C

FEATURES

- * Independently tested and verified by ETL
- * Guaranteed to meet TIA 568 C.2 and ISO/IEC 11801 specifications
- * Snag-less Protection Design
- * Multi-Color options available

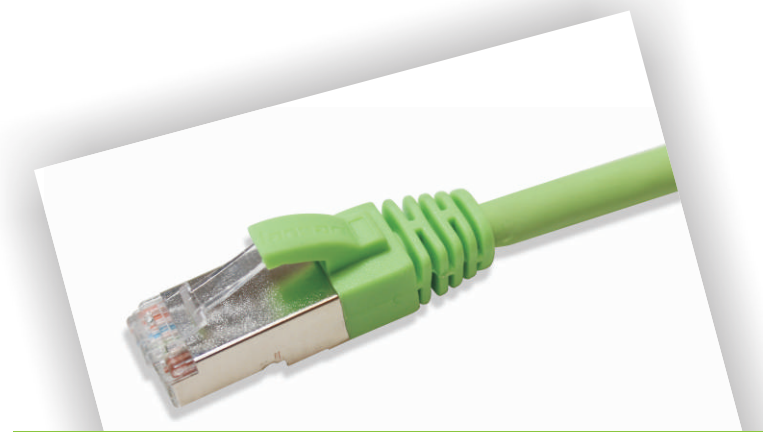
STANDARDS COMPLIANCE

- * TIA 568 C.2
- * ISO 11801 CLASS EA
- * ETL approved
- * UL Listed

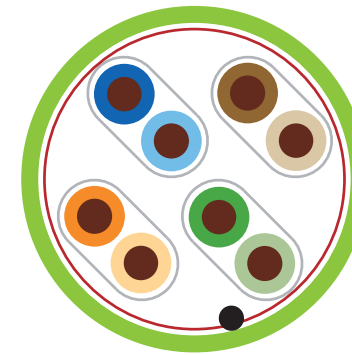
ORDERING INFORMATION

Part No.	Description
LC6AR-XXF**	LS-6A F/UTP Patch Cord PVC CMR ** XX M
LC6AP-XXF**	LS-6A F/UTP Patch Cord PVC CMP ** XX M
LC6AL-XXAF**	LS-6A F/UTP Patch Cord LSZH ** XX M

XX indicated to length, standard length 1m(01) 2m(02) 3m(03) 5m(05)
** indicated to color, if need other color or length, please indicate in order



PATCH CORD Category 6A Shield



Category 6A F/FTP Patch Cord

SHIEDED COPPER CABLING SYSTEM

DESCRIPTION

LANSAN Category 6A F/FTP Patch Cords are made in flexible stranded conductor with Snag-less Booted Design, easy to insert and remove cables in high density applications.

Combined with Shield Keystone, LAN Cable and Patch Panel, it provides excellent compatible performance.

SPECIFICATION

Conductor	26AWG, Stranded Copper
Insulation	Foamed Polyethylene (FPE)
Shield	Individual / Overall Aluminum Foil / Drain wire
Outer Sheath	Low Smoke Zero Halogen (LSZH)
Plug	Gold plated connector
Installation Temperature	0°C ~ +50°C
Operating Temperature	-20°C ~ +60°C

FEATURES

- * Independently tested and verified by ETL
- * Guaranteed to meet TIA 568 C.2 and ISO/IEC 11801 specifications
- * Snag-less Protection Design
- * Multi-Color options available

STANDARDS COMPLIANCE

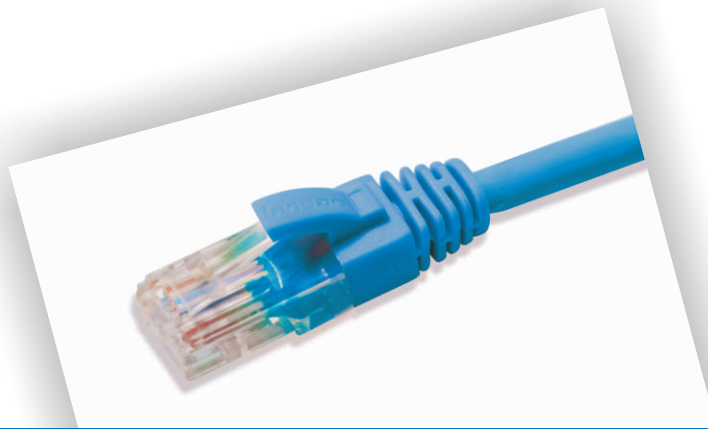
- * TIA 568 C.2
- * ISO 11801 CLASS EA
- * ETL approved
- * UL Listed

ORDERING INFORMATION

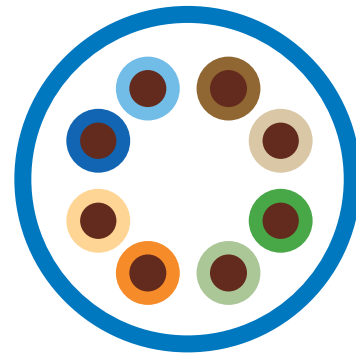
Part No.	Description
LC6AF2R-XXF**	LS-6A F/FTP Patch Cord PVC CMR ** XX M
LC6AF2P-XXF**	LS-6A F/FTP Patch Cord PVC CMP ** XX M
LC6AF2L-XXF**	LS-6A F/FTP Patch Cord LSZH ** XX M

XX indicated to length, standard length 1m(01) 2m(02) 3m(03) 5m(05)
** indicated to color, if need other color or length, please indicate in order





PATCH CORD Category 6 Un-shield



Category 6 U/UTP Patch Cord

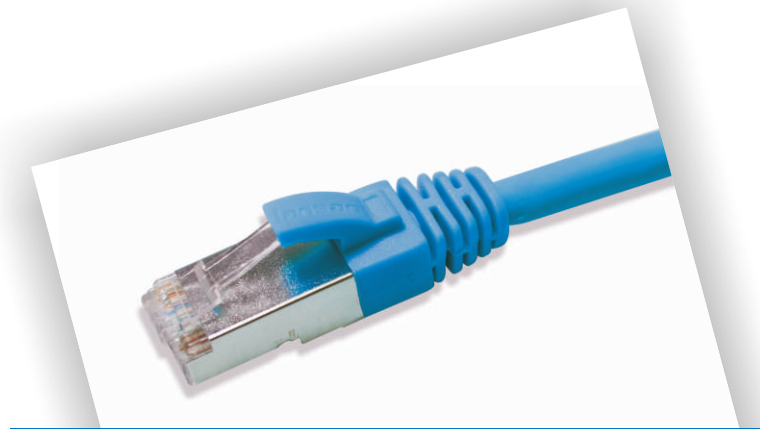
UNSHIEDED COPPER CABLING SYSTEM

DESCRIPTION	SPECIFICATION
<p>LANSAN Category 6 U/UTP Patch Cords are made in flexible stranded conductor with Snag-less Booted Design, easy to insert and remove cables in high density applications.</p> <p>Combined with Un-Shield Keystone, LAN Cable and Patch Panel, it provides excellent compatible performance.</p>	<p>Conductor 24AWG, Stranded Copper</p> <p>Insulation High Density Polyethylene (HDPE)</p> <p>Shield Overall Aluminum Foil / Drain wire</p> <p>Outer Sheath Low Smoke Zero Halogen (LSZH)</p> <p>Plug Gold plated connector</p> <p>Installation Temperature 0°C ~ +50°C</p> <p>Operating Temperature -20°C ~ +60°C</p>
FEATURES	STANDARDS COMPLIANCE
<ul style="list-style-type: none"> * Independently tested and verified by ETL * Guaranteed to meet TIA 568 C.2 and ISO/IEC 11801 specifications * Snag-less Protection Design * Multi-Color options available 	<ul style="list-style-type: none"> * TIA 568 C.2 * ISO 11801 CLASS D * ETL approved * UL Listed

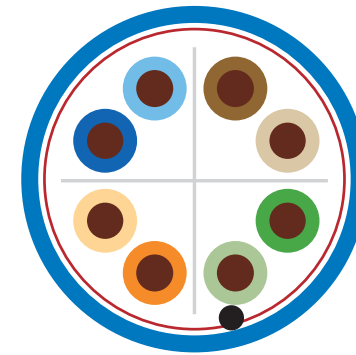
ORDERING INFORMATION

Part No.	Description
LC6-XXF**	LS-6 U/UTP Patch Cord PVC CM ** XX M
LC6R-XXF**	LS-6 U/UTP Patch Cord PVC CMR ** XX M
LC6P-XXF**	LS-6 U/UTP Patch Cord PVC CMP ** XX M
LC6L-XXF**	LS-6 U/UTP Patch Cord LSZH ** XX M

XX indicated to length, standard length 1m(01) 2m(02) 3m(03) 5m(05)
 ** indicated to color, if need other color or length, please indicate in order



PATCH CORD Category 6 Shield



Category 6 F/UTP Patch Cord

SHIEDED COPPER CABLING SYSTEM

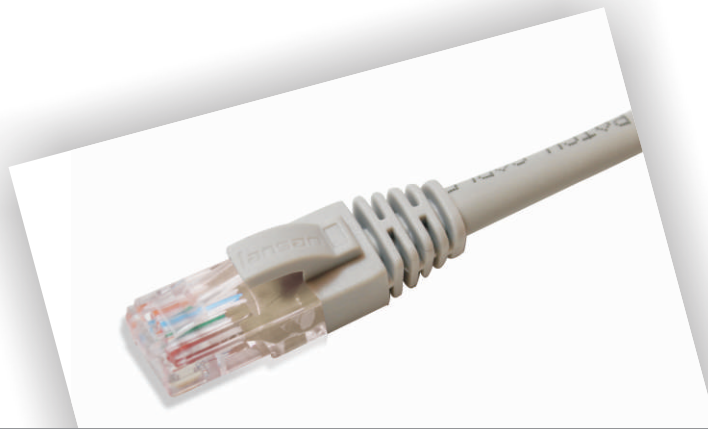
DESCRIPTION	SPECIFICATION
<p>LANSAN Category 6 F/UTP Patch Cords are made in flexible stranded conductor with Snag-less Booted Design, easy to insert and remove cables in high density applications.</p> <p>Combined with Shield Keystone, LAN Cable and Patch Panel, it provides excellent compatible performance.</p>	<p>Conductor 26AWG, Stranded Copper</p> <p>Insulation High Density Polyethylene (HDPE)</p> <p>Shield Overall Aluminum Foil Tape / Drain Wire</p> <p>Outer Sheath Polyvinyl Chloride (PVC)</p> <p>Plug Gold plated connector</p> <p>Installation Temperature 0°C ~ +50°C</p> <p>Operating Temperature -20°C ~ +60°C</p>
FEATURES	STANDARDS COMPLIANCE
<ul style="list-style-type: none"> * Independently tested and verified by ETL * Guaranteed to meet TIA 568 C.2 and ISO/IEC 11801 specifications * Snag-less Protection Design * Multi-Color options available 	<ul style="list-style-type: none"> * TIA 568 C.2 * ISO 11801 CLASS D * ETL approved * UL Listed

ORDERING INFORMATION

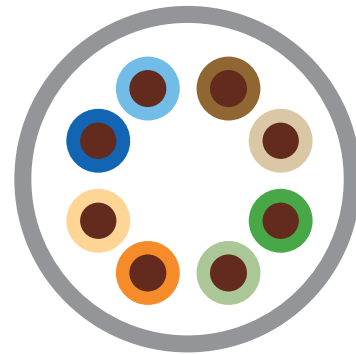
Part No.	Description
LC6F-XXF**	LS-6 F/UTP Patch Cord PVC CM ** XX M
LC6FR-XXF**	LS-6 F/UTP Patch Cord PVC CMR ** XX M
LC6FP-XXF**	LS-6 F/UTP Patch Cord PVC CMP ** XX M
LC6FL-XXF**	LS-6 F/UTP Patch Cord LSZH ** XX M

XX indicated to length, standard length 1m(01) 2m(02) 3m(03) 5m(05)
 ** indicated to color, if need other color or length, please indicate in order





PATCH CORD Category 5E Un-shield



Category 5E U/UTP Patch Cord

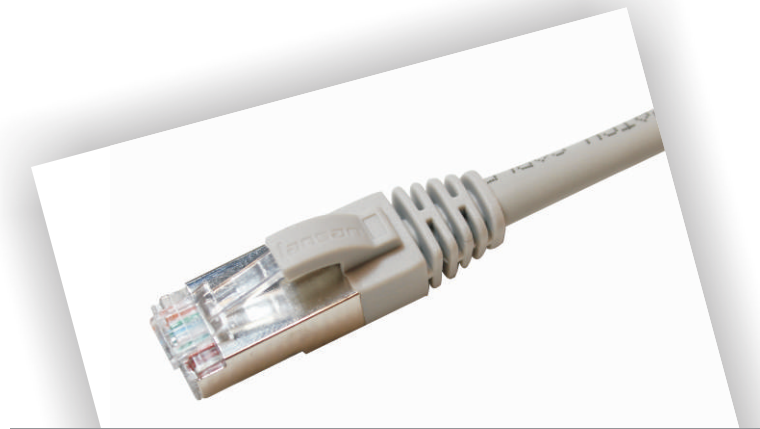
UNSHIEDED COPPER CABLING SYSTEM

DESCRIPTION	SPECIFICATION	
LANSAN Category 5E U/UTP Patch Cords are made in flexible stranded conductor with Snag-less Booted Design, easy to insert and remove cables in high density applications.	Conductor	24AWG, Stranded Copper
Combined with Un-Shield Keystone, LAN Cable and Patch Panel, it provides excellent compatible performance.	Insulation	High Density Polyethylene (HDPE)
	Outer Sheath	Polyvinyl Chloride (PVC)
	Plug	Gold plated connector
	Installation Temperature	0°C ~ +50°C
	Operating Temperature	-20°C ~ +60°C
FEATURES	STANDARDS COMPLIANCE	
* Independently tested and verified by ETL	* TIA 568 C.2	
* Guaranteed to meet TIA 568 C.2 and ISO/IEC 11801 specifications	* ISO 11801 CLASS D	
* Snag-less Protection Design	* ETL approved	
* Multi-Color options available	* UL Listed	

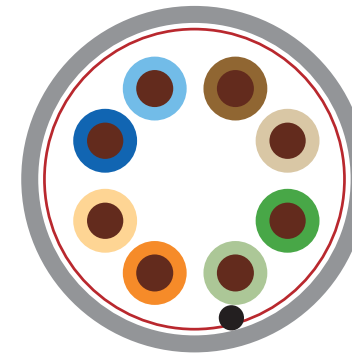
ORDERING INFORMATION

Part No.	Description
LC5E-XXF**	LS-5E U/UTP Patch Cord PVC CM ** XX M
LC5ER-XXF**	LS-5E U/UTP Patch Cord PVC CMR ** XX M
LC5EP-XXF**	LS-5E U/UTP Patch Cord PVC CMP ** XX M
LC5EL-XXAF**	LS-5E U/UTP Patch Cord LSZH ** XX M

XX indicated to length, standard length 1m(01) 2m(02) 3m(03) 5m(05)
 ** indicated to color, if need other color or length, please indicate in order



PATCH CORD Category 5E Shield



Category 5E F/UTP Patch Cord

SHIEDED COPPER CABLING SYSTEM

DESCRIPTION	SPECIFICATION	
LANSAN Category 5E F/UTP Patch Cords are made in flexible stranded conductor with Snag-less Booted Design, easy to insert and remove cables in high density applications.	Conductor	26AWG, Stranded Copper
Combined with Shield Keystone, LAN Cable and Patch Panel, it provides excellent compatible performance.	Insulation	High Density Polyethylene (HDPE)
	Shield	Overall Aluminum Foil Tape / Drain Wire
	Outer Sheath	Polyvinyl Chloride (PVC)
	Plug	Gold plated connector
	Installation Temperature	0°C ~ +50°C
	Operating Temperature	-20°C ~ +60°C
FEATURES	STANDARDS COMPLIANCE	
* Independently tested and verified by ETL	* TIA 568 C.2	
* Guaranteed to meet TIA 568 C.2 and ISO/IEC 11801 specifications	* ISO 11801 CLASS D	
* Snag-less Protection Design	* ETL approved	
* Multi-Color options available	* UL Listed	

ORDERING INFORMATION

Part No.	Description
LC5EF-XXF**	LS-5E F/UTP Patch Cord PVC CM ** XX M
LC5EFR-XXF**	LS-5E F/UTP Patch Cord PVC CMR ** XX M
LC5EFP-XXF**	LS-5E F/UTP Patch Cord PVC CMP ** XX M
LC5EFL-XXAF**	LS-5E F/UTP Patch Cord LZSH ** XX M

XX indicated to length, standard length 1m(01) 2m(02) 3m(03) 5m(05)
 ** indicated to color, if need other color or length, please indicate in order

